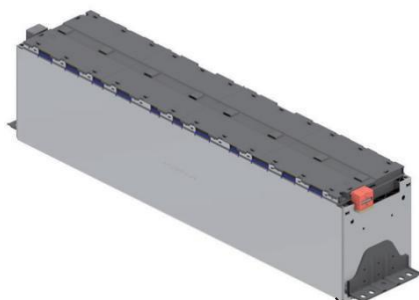


EP-LFP280Ah 1P8S MODULE



Lithium-ion battery module for use in electric powered mobilities. The system consists of Lithium-Ion-Cells, connected in series to reach the system voltage and in parallel to achieve greater capacity. The battery system voltage and capacity can be verified by different combinations of modules.

Advantage



- Recharges much faster
- Longer service life
- Weighs less
- Incredible small size
- High Rigidity
- Low self-discharge

Certification



Specification

No.	Items	MSXX5-25.76V280A		Note
		280Ah1P8S		
1	Nominal voltage(V)	25.76		
2	Operating voltage(V)	min	20	
3		max	29.2	
4	Nominal capacity (Ah)	280		0.5C , 25°C
5	Nominal energy (KWh)	7.213		0.5C , 25°C
7	Group mode	1P8S		
8	End of life residual capacity (Ah)	224		
9	Module weigh (Kg)	47.72		
10	Maximum continuous charge current (A)	280		
11	Maximum continuous discharge current (A)	280		
12	Maximum pulse discharge current(≤30s)(A)	560		
13	SOC operating range (%)	10~90		
14	Insulation requirements(MΩ)	≥20		
15	Module cooling method	Natural cooling		
16	Module heating method	NO		
17	Shipping capacity (SOC)	≈30%		SOC is consistency in the same batch
18	Dimension L (mm)	677.6		
	Dimension B (mm)	180		
	Dimension H (mm)	225		